

HARDGRIP RIVET

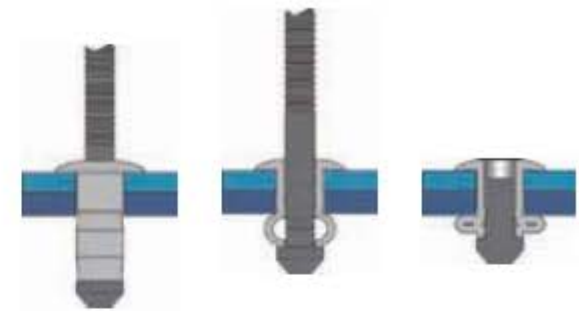
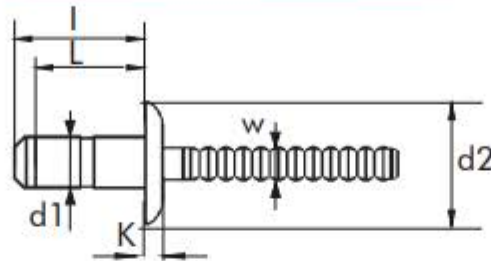
Dome head


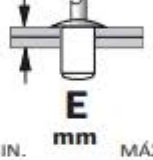




STAINLESS STEEL A2/STAINLESS STEEL A2



BODY: Stainless Steel /Inox 304

MANDREL: Stainless Steel /Inox 304



d1 Ø mm	L Nominal mm	 mm	d2 Ø mm	K mm	W Ø mm	PACKAGING		I Max. mm	 E mm MIN. MAX.	 (N)	 (N)	REFERENCE
						 Inner	 Outer					
3,2	7,0	3,30-3,40	6,50	1,00	2,10	500	4.000	10,00	1,0 - 3,0	2000	1700	01896003207
	9,5					500	3.000	12,00	3,0 - 5,0			01896003210
	11,5					500	3.000	15,00	5,0 - 7,0			01896003212
4,0	7,5	4,20-4,40	7,70	1,30	2,60	500	4.000	10,50	1,0 - 3,0	5200	4000	01896004008
	9,5					500	3.000	12,50	3,0 - 5,0			01896004010
	12,5					500	3.000	15,50	5,0 - 7,0			01896004013
4,8	9,5	5,00-5,20	9,20	1,20	3,20	500	3.000	13,00	1,5 - 3,5	5500	5000	01896004809
	11,5					250	2.000	15,00	3,5 - 6,0			01896004812
	14,5					250	2.000	18,00	6,0 - 8,5			01896004815
	16,5					250	2.000	20,00	8,5 - 11,0			01896004817

Tests according to EN ISO 14589

Note: Under request we do manufacture Hardgrip rivets with countersunk head (d2).

